



CHARLOTTE-MECKLENBURG POLICE DEPARTMENT  
**ON THE BEAT**  
RESPONSE AREA MONTHLY NEWSLETTER

Hickory Grove Response Area Two

April 2015



Welcome to all my readers;

This is the Hickory Grove Response Area Two newsletter. You are receiving this newsletter because you are listed as a member of our community. If you know of someone that does not receive this newsletter but would like to be included to our mailing list, please email Lt. Eric Brady at [ebrady@cmpd.org](mailto:ebrady@cmpd.org)

To view this newsletter online or to access traffic accident reports, police reports or to look up current crime trends and events please visit [www.cmpd.org](http://www.cmpd.org)

If you have a community event or story to share in our newsletter, please contact Officer Ericka Conway at [econway@cmpd.org](mailto:econway@cmpd.org)

Included in this issue:

- Response Area 2 map
- Part One crime comparison January 2013 to January 2014
- Significant Arrests
- Rental Property Ordinance
- Community Meeting and Events calendar
- Vacation Traveling Safety Tips



**Response Area Two Commander- Lieutenant Eric F. Brady**

I've been the Response Area Two Commander since January 2012 when Chief Monroe implemented the Lieutenants position in efforts to introduce his crime fighting strategy. I have been with CMPD since 1994 and graduated with the 117<sup>th</sup> Recruit Class. Since I have been with CMPD, I have been assigned to several divisions in various assignments to include an adjunct instructor at our academy. I am originally from Corning, NY I am a veteran of the United States Air Force from 1988-1992 and a Criminal Justice graduate from UNC Charlotte. Upon graduation, I was hired by CMPD.

I can be reached by email at [ebrady@cmpd.org](mailto:ebrady@cmpd.org)

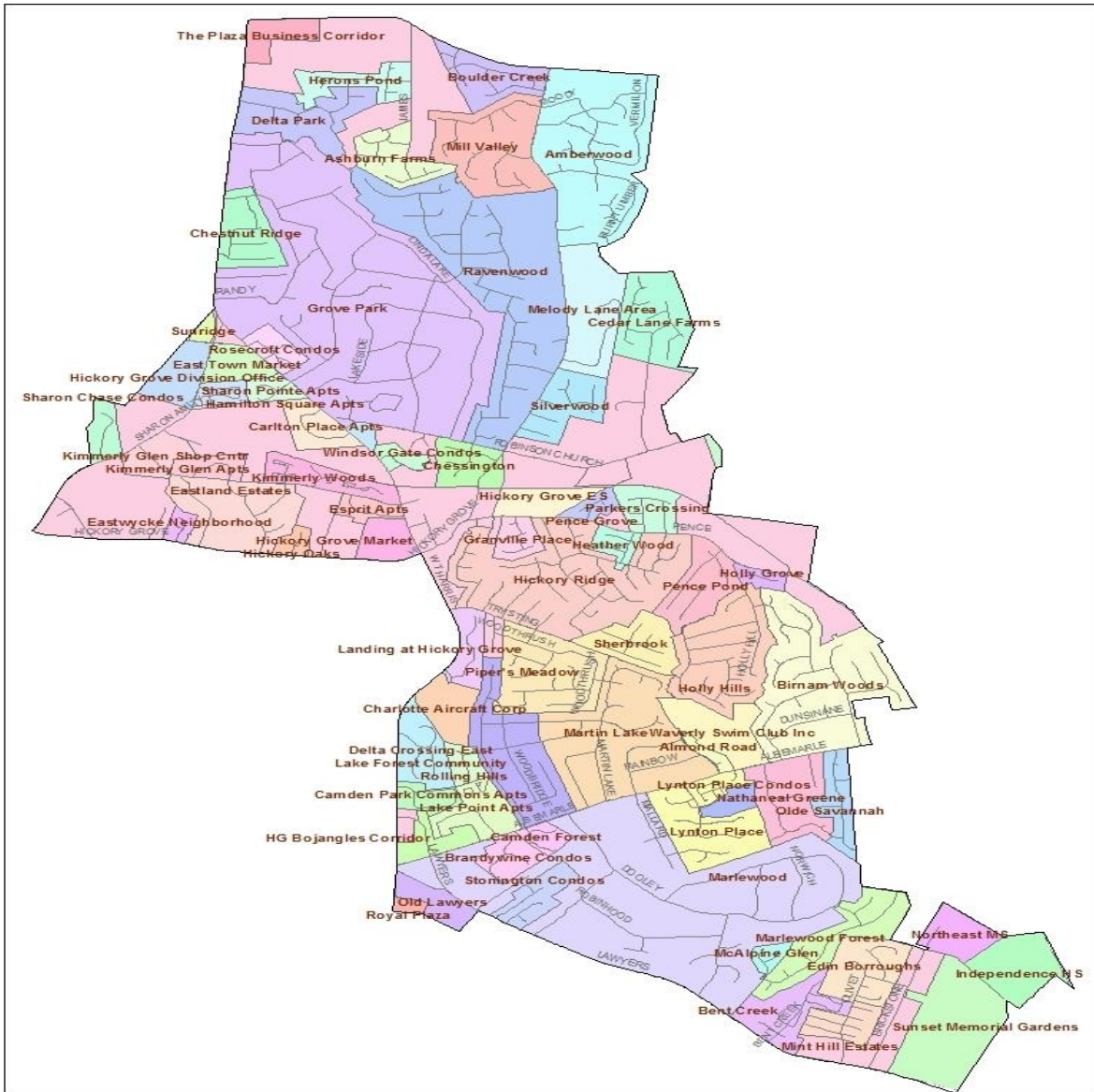


I have been the Response Area Two Coordinator since October 2006. I have been with CMPD since 2002. I worked in law enforcement in Gaston County prior to CMPD and have 17 years total service. I enjoy what I do and find working with communities to be a very rewarding experience. I served in the NC Army National Guard for 8 years and am a Criminal Justice graduate from Gardner Webb University. If you need any assistance my email is [econway@cmpd.org](mailto:econway@cmpd.org).

## Geographic's for Response Area 2

Hickory Grove Division's Response Area 2 consists of approximately 7.5 square miles of area and 76 street miles. There are approximately 22,700 people that reside in Response Area 2. It consists mostly of residential areas with either single or multi-family homes, apartments or condominiums. There are several roads that make up the border, but the major thoroughfares include Lawyers Rd., WT Harris Blvd., Plaza Rd. Ext., Plott Rd., Pence Rd. & Albemarle Rd. We border the incorporated area of Mint Hill with Independence High School at that border. We also have the Northeast Middle School.

## Hickory Grove Response Area 2 Map



**Offenses in Hickory Grove Response Area 2  
March 2015 Compared to March 2014**

**Percent Change**

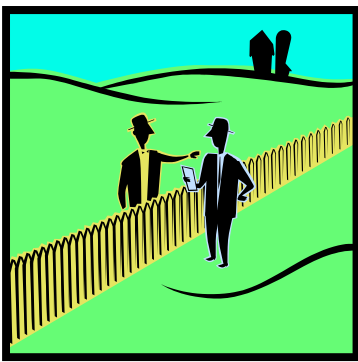
<b>Incident Type</b>	<b>Previous Count</b>	<b>Current Count</b>	<b>Difference</b>	<b>Percent Change</b>
Residential Burglary	11	14	3	27.27 %
Aggravated Assault-Other Weapon	0	2	2	NA
Larceny of Bicycle	0	1	1	NA
Larceny-Purse Snatching	0	1	1	NA
Aggravated Assault-Gun	2	2	0	0.00 %
Commercial Burglary	2	2	0	0.00 %
Larceny from Building	3	3	0	0.00 %
Attempted Rape	1	0	-1	-100.00 %
Strong Arm Robbery	2	1	-1	-50.00 %
Aggravated Assault-Knife	4	2	-2	-50.00 %
Arson	2	0	-2	-100.00 %
Auto Theft	6	4	-2	-33.33 %
Larceny-Other	19	17	-2	-10.53 %
Armed Robbery	4	0	-4	-100.00 %
Larceny-Shoplifting	7	1	-6	-85.71 %
Larceny from Auto	28	11	-17	-60.71 %

The biggest concern for last month's crime statistics would be the slight increase in residential burglaries. I can't encourage you enough to call 911 and report any suspicious activity that you may see or occurring. Many times when we take a break in report we learn after speaking with neighbors that someone did notice a suspicious vehicle or person but they did not report it or call 911 when they saw it occurring. Please don't hesitate to call and let us check things out. You may just prevent your neighbor's house from being broken into and or your neighborhood from being a target of criminal activity. Spring is here and school will be out soon. Vacations will start. Plan ahead and have a trusting neighbor or friend to keep an eye out for your property.



I have been a Response Area 2 Coordinator on and off since September 2012 with Officer Conway. I have been with CMPD since 2007. I recently was a part of the Southeast Violent Crimes Task Force. I served on active duty in the Army for 9 years prior to working for CMPD. I enjoy working closely with our communities and neighborhood leaders. Please feel free to contact me with any concerns at [Jsilcox@cmpd.org](mailto:Jsilcox@cmpd.org).

**PLEASE ENROLL IN NEXTDOOR NEIGHBOR IF YOU HAVE A SMARTPHONE YOU MAY GET THE FREE APP AND ALWAYS BE INFORMED!!!!**



Nextdoor is a free private social media for your neighborhood. For those of you using it thank you! For those of you interested in it or if you have questions please feel free to contact Officer Conway ([econway@cmpd.org](mailto:econway@cmpd.org)). It has become a very valuable tool to a lot of neighborhoods. Visit their website at <https://nextdoor.com/>.



## **Crisis Intervention Team**

### **A pre-booking Jail Diversion Program**

CIT is a community-based collaboration between law enforcement, mental health agencies, consumers and family members, National Alliance on Mental Illness (NAMI)-Charlotte, and Central Piedmont Community College (CPCC).

Law Enforcement Officers are frequently front-line responders to persons in crisis with a serious mental illness. In an effort to better prepare officers to respond to these individuals, a number of communities (more than 500 in the US) have developed a **Crisis Intervention Team (CIT)** program. These initiatives are modeled after the parent program which began in 1988 in Memphis, Tennessee.

### **The Three Components of CIT Programs:**

1. **Intensive training** - Police officers and other first responders receive up to 40 hours of training regarding mental illness, co-occurring disorders, and response strategies.
2. **Strong mental health partnerships** – Police and mobile crisis workers who respond to people in crisis seek viable options for linking individuals with mental health treatment in lieu of arrest.
3. **Significant mental health consumer and family involvement** - Consumer and family advocates are integrally involved in the design and implementation of local CIT programs.

**CIT** is a specialized law enforcement response to people in serious mental health crisis. Carefully selected volunteer patrol officers receive Crisis Intervention Team training in a 40-hour certification course where they learn:

- Recognizing signs of mental illness for persons in crisis
- Basic diagnosis and medication knowledge
- Verbal de-escalation skills
- Community resource information
- How CIT works and how it fits into each department's operations

### **CIT STEP-BY-STEP**

1. Family member or other person calls 911 for mental health crisis.
2. Patrol Officer dispatched; when mental health crisis is identified CIT officer is called to the scene.
3. CIT Officer assesses situation utilizing verbal de-escalation and other learned skills then determines best course of action; if more extensive mental health assessment is needed Mobile Crisis can be called to the scene.
4. Mental health consumer receives appropriate services while coordination with Criminal Justice System maintains accountability.

### **2015 CIT for Law Enforcement Training Dates**

- February 16-20, 2015



- 
- May 4-8, 2015
- August 10-14, 2015
- November 2-6, 2015

### **2015 CIT for Telecommunicators Training Dates**

- January 22 & 23, 2015
- September 24 & 25, 2015
- December 10 & 11, 2015

### **Contacts**

[Captain James Wilson](#), CMPD Executive Sponsor, Charlotte Mecklenburg Police Department, 704-575-9446 and [Captain Ryan Butler](#), CMPD Executive Sponsor, Charlotte Mecklenburg Police Department, 704-301-8945

[Sarah M. Greene](#), LCSW, Program Administrator, Trauma and Justice Partnerships, Mecklenburg County Provided Services Organization, 704-336-2944

[Lisa Murray](#), LPC, LCAS, NCC, Mecklenburg County CIT Coordinator, Trauma and Justice Partnerships, Mecklenburg County Provided Services Organization, 704-534-3238

### **Resources**

Charlotte Chapter of the National Alliance on Mental Illness (NAMI), 704-333-8218,

[bod@nami-charlotte.org](mailto:bod@nami-charlotte.org)

[CIT Center at the University of Memphis](#)

[NAMI CIT Center](#)

Sometimes, first aid isn't  
a bandage or CPR  
or the Heimlich or calling 911.

Sometimes, first aid is **YOU!**

Mental Health First Aid

\$20/person (includes book and snack)

9:00 a.m. to 1:30 pm. April 21-22, 2015

Cardinal Innovations Mecklenburg

Community Operations Center

1100 South Tryon St., Suite 100

Charlotte, NC 28203

You are more likely to encounter someone- friend, family member, coworker, neighbor or member of the community- in an emotional or mental crisis than someone having a heart attack. Mental Health First Aid teaches a 5-step action plan to offer initial help to people with the signs and symptoms of a mental illness or a crisis, and connect them with the appropriate professional, peer, social, or self-help care. Anyone can take the 8-hour Mental Health First Aid course- first responders, students, teachers, leaders of faith communities, human service professionals and caring citizens.

Someone you know could be experiencing a mental illness or crisis. You can help them.

Register with each link below to attend both dates in order to receive MHFA certification:

<http://www.brownpapertickets.com/event/1375913>

<http://www.brownpapertickets.com/event/1375916>

**For more information contact:**

**Amy Rudisill 980-938-4208**

**or Wanda Douglas 704-957-7096**

**Significant Arrests**





JONES, MARCUS JAQUAN

Charges for Arrest #: 1643084

Court Case	Arrest Type	Charge Description	Bond \$ Amount	Type	Arrest Process
5902015208740	Felony	BREAKING AND OR ENTERING (F)			MAGISTRATE ORDER
5902015208742	Felony	CONSP B&E BLDG-FELONY/LARCENY			MAGISTRATE ORDER
5902015208741	Felony	LARCENY AFTER BREAK/ENTER			MAGISTRATE ORDER



HAMPTON, ANDRE LAMAR

Charges for Arrest #: 1644229

Court Case	Arrest Type	Charge Description	Bond \$ Amount	Type	Arrest Process
5902015210099	Felony	ATTEMPTED COMMON LAW ROBBERY	15000.00	SECURED BOND	WARRANT FOR ARREST